

RESTORE ACT Direct Component Multiyear Plan Narrative

Department of the Treasury

OMB Approval No. 1505-0250

Directions: Use this form for the Initial Multiyear Plan and any subsequent amendments to an accepted Multiyear Plan. For amendments, include only new and/or materially modified activities.

Multiyear Plan Version (Initial or Amendment Number):	Initial
Date of Initial Multiyear Plan Acceptance:	N/A
Date of Last Multiyear Plan Revision Acceptance:	N/A

Eligible Applicant Name:	St. Charles Parish
Name and Contact Information of the Person to be contacted (POC) on matters concerning this Multiyear Implementation Plan:	
POC Name:	Carla Chiasson
POC Title:	Grants Officer
POC Email:	cchiasson@stcharlesgov.net
POC Phone:	(985) 783-5165

NARRATIVE DESCRIPTION:
1. A description of each activity, including the need, purpose, objective(s), milestones and location. Include map showing the location of each activity.
<p>The west bank of St. Charles Parish (west side of the Mississippi River) is outside of the U. S. Army Corps of Engineers' Hurricane Storm Damage Risk Reduction System (HSDRRS) and unprotected from storm surges associated with both hurricanes and high tide conditions. This portion of the Parish is subject to heavy rainfall, tidal surges from the Gulf of Mexico, and hurricane flooding, often resulting in damages to the industrial, commercial, residential, agricultural, and environmental facilities located in this area. Existing levee projects adjacent to this area have the potential to act as a funnel, thereby increasing the storm surge elevations in the project area.</p> <p>St. Charles Parish recognizes the importance of flood protection and as a result has taken action by investing in the design and construction of the West Bank Hurricane Protection Levee (WBHPL). The WBHPL is a four phased, 33-mile earthen levee alignment that begins with the Sunset Levee on the western flank in Des Allemands and extends to the Davis Pond Freshwater Diversion West Guide Levee to the east in Luling. The WBHPL includes various flood control structures, such as pump stations, canal gates and tidal interchange structures in each of its phases that are necessary to address both the interior drainage and the resulting encapsulated wetlands ecosystem. Permits have been secured and the Parish is currently constructing projects for the initial lift to provide protection up to +7.5' elevation. A second lift will bring the elevation of the WBHPL to +12.5'. The WBHPL is part of the larger, regional flood protection project, the Upper Barataria Risk Reduction System, which is included in the Coastal Protection and Restoration Authority's 2017 Coastal Master Plan Update.</p> <p>Using the allocated RESTORE Act Direct Component funding, St. Charles Parish is proposing to construct a coastal flood protection project, the Paradis Canal Gate, which is a WBHPL control structure. As part of the overall levee system, it is necessary to install the proposed Paradis Canal Gate to prevent backwater flooding through the Paradis Canal, located on the border of Paradis and Boutte. This will provide protection to properties on the west bank of St. Charles Parish, thus reducing future economic losses. As of October 2017, the St. Charles Parish RESTORE Act Direct Component allocation available for distribution is \$355,484.86; however, the parish intends to use future Direct Component funding that will</p>

According to the Paperwork Reduction Act of 1995, no persons are required to respond to a collection of information unless it displays a valid OMB control number. The valid OMB control number for this information collection is 1505-0250. Comments concerning the time required to complete this Information collection, including the time to review instructions, search existing data resources, gathering and maintaining the data needed, and completing and reviewing the collection of information, should be directed to the Department of the Treasury, Office of Gulf Coast Restoration, 1500 Pennsylvania Ave., NW, Washington, DC 20220.

become available from BP Penalty Deposits. The estimated gross allocations through 2018 is \$390,283.56; through 2020 is \$563,252.54.

The proposed project will involve the construction of the following elements:

1. a flood control structure (t-wall to elev. +14.5', vertical gate opening, and sluice gates)
2. tie-ins to the existing levees (Sunset phase levee on the west side of the Paradis Canal and Magnolia Ridge phase levee on the east side)
3. an extension of the access roadway from the Magnolia Ridge Pump Station
4. 4" unreinforced concrete and sheet pile for erosion control and stability

The project is designed to work synergistically with the Magnolia Ridge Pump Station. As approved by the Department of Natural Resources (DNR) and the U.S. Army Corps of Engineers (USACE), the Magnolia Ridge Pump Station project will include the construction of a drainage ditch from the Paradis Canal that will lead to a weir structure immediately adjacent to the pump station's detention basin. The weir structure will be a low-level earthen dam, which is designed to prevent storm water flow out of the Paradis swamp at an elevation of +2 in order to maintain vegetation in the swamp. During events that require the gate to be closed, water draining from the north side of the gate will be routed through the drainage ditch and pumped by the Magnolia Ridge Pump Station. Combined flows from the Magnolia Ridge watershed area, overflows from the Paradis Swamp, and Paradis Canal will be pumped into the marshland south of the pumping station.

The purpose of the project is to provide flood protection for the residents, businesses, and industries of the west bank of St. Charles Parish. This flood protection serves to protect the sustainability of the coastal landscape, communities, and economic future of the area. It will also improve the Parish's resiliency during storm recovery. The objective is to construct the Paradis Canal Gate to prevent backwater flooding through the Paradis Canal Gate opening in the WBHPL.

High Level Milestones include the following:

- Advertisement for Bids
- Award construction contract
- Issue Notice to Proceed
- Issue Substantial Completion

A project map of the WBHPL that depicts the Paradis Canal Gate location is included as an attachment.

2. How the applicant made the multiyear plan available for 45 days for public review and comment, in a manner calculated to obtain broad-based participation from individuals, businesses, Indian tribes, and non-profit organizations, such as through public meetings, presentations in languages other than English, and postings on the Internet. The applicant will need to submit documentation (e.g., a copy of public notices) to demonstrate that it made its multiyear plan available to the public for at least 45 days. In addition, describe how each activity in the multiyear plan was approved after consideration of all meaningful input from the public and submit documentation (e.g., a letter from the applicant's leadership approving submission of the multiyear plan to Treasury or a resolution approving the applicant's multiyear plan).

A public notice was published on the dates below in the Parish's Official Journal, the St. Charles Herald Guide, informing the public of the availability to review and comment on the St. Charles Parish RESTORE Act Direct Component Multiyear Plan. The advertisement notified the public that the Multiyear Plan was available for review in the St. Charles Parish Grants Office and on the Parish website (www.stcharlesparish-la.gov). The Multiyear Plan was available for public review and comment for 45 days beginning the day following the initial date of publication. The notice included the name and address of the individual in which to submit comments; the deadline for written comment was November 27, 2017. St. Charles Parish also used social media outlets throughout the public comment period to inform the public that they were encouraged to review and comment on the Multiyear Plan. Utilizing these various forms of publication helped St. Charles Parish to obtain broad-based participation from individuals, businesses, Indian Tribes, and non-profit organizations.

No questions or comments were received. The final plan was approved for submission to the U.S. Department of the Treasury by the St. Charles Parish Council via Resolution No. 6320 on December 11, 2017.

Key Dates:

Dates of Public Notice: 10/12/2017
10/19/2017

Public Comment Period: 10/12/2017 - 11/27/2017

Resolution Adopted: December 11, 2017

3. How each activity included in the applicant's multiyear plan matrix meets all the requirements under the RESTORE Act, including a description of how each activity is eligible for funding based on the geographic location of each activity and how each activity qualifies for at least one of the eligible activities under the RESTORE Act.

The Paradis Canal Gate proposed in this Multiyear plan is located on the west bank of St. Charles Parish. St. Charles Parish is one of the 20 parishes in Louisiana that are eligible for the Direct Component funds available through the RESTORE Act as defined in 31 CFR Part 34(l) of the Final Rule.

The Paradis Canal Gate is a coastal flood protection project because it will prevent backwater flooding through the Paradis Canal providing flood protection to the west bank of St. Charles Parish. Coastal flood protection projects qualify as an eligible activity under the RESTORE Act as defined in 31 CFR Part 34.201(g) of the Final Rule.

This project is included in the Coastal Protection and Restoration Authority's 2017 Coastal Master Plan Update.

4. Criteria the applicant will use to evaluate the success of the activities included in the multiyear plan matrix in helping to restore and protect the Gulf Coast Region impacted by the Deepwater Horizon oil spill.

The success of this project will be the prevention of backwater flooding through the Paradis Canal Gate opening as part of the West Bank Hurricane Protection Levee system.

5. How the activities included in the multiyear plan matrix were prioritized and list the criteria used to establish the priorities.

Providing complete levee protection throughout the Parish is a goal of the Parish Administration and the West Bank Hurricane Protection Levee (WBHPL) is a priority project. Many resources have been invested in the design and construction of the WBHPL. The Paradis Canal Gate was prioritized as it is a crucial and necessary piece of the levee system as a whole that meets requirements of the RESTORE Act and the timeline constraints of the approval process.

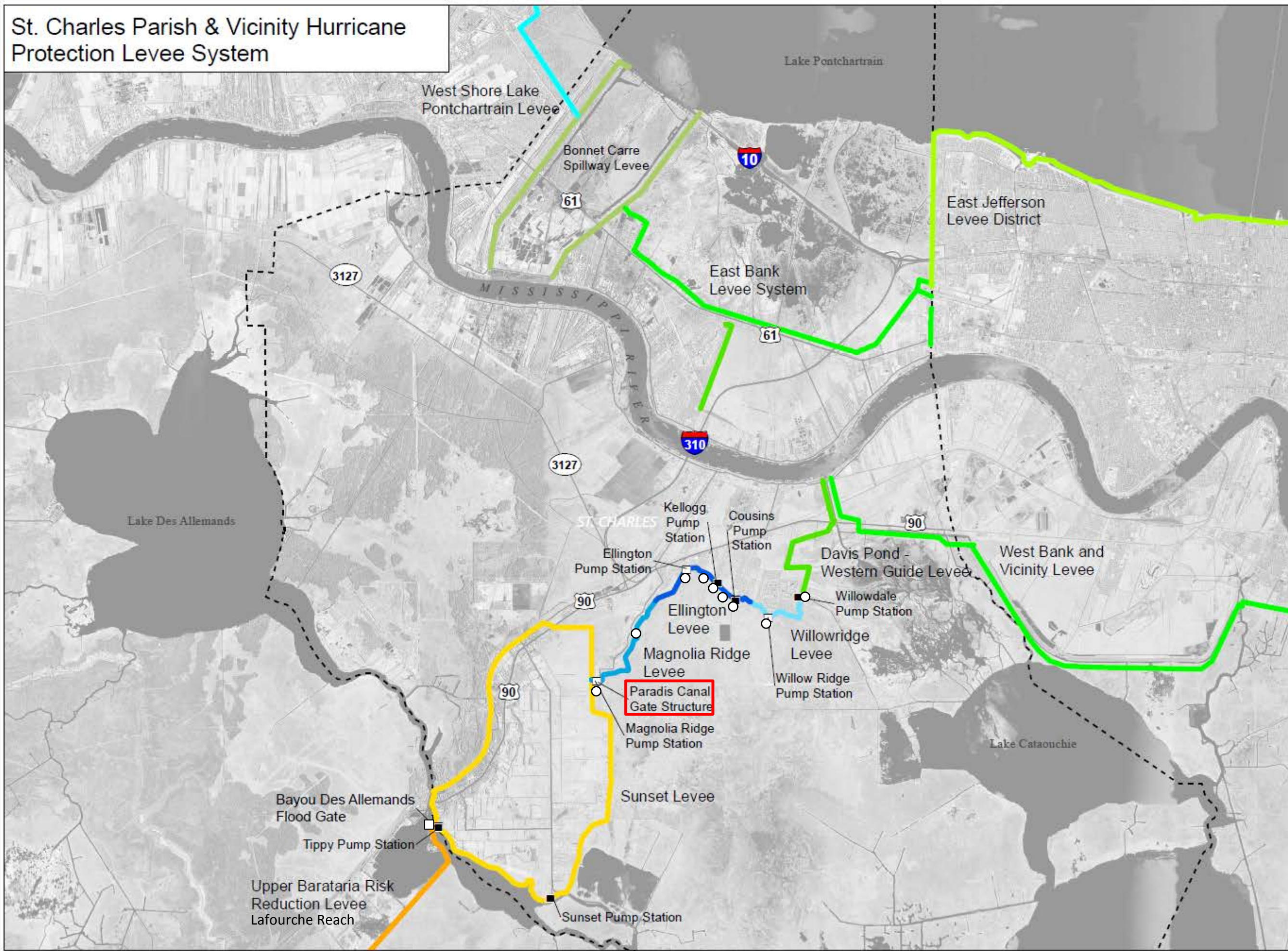
6. If applicable, describe the amount and current status of funding from other sources (e.g., other RESTORE Act contribution, other third party contribution) and provide a description of the specific portion of the project to be funded by the RESTORE Act Direct Component.

The Paradis Canal Gate project is estimated to be approximately \$5,081,447.80 for construction. The Parish intends to use Direct Component (\$390,283.56) and the CPRA RESTORE Act Parish Matching Funds (\$2,540,724.00) to fund this project. The Parish applied for the \$2,540,724.00 from CPRA for this project through the CPRA-Parish RESTORE Act Matching Opportunities Program on August 25, 2017 and on December 13, 2017, the Parish was notified that the Paradis Canal Gate project was selected for funding. The Parish share of the matching program is \$2,150,440.24. The Parish plans to submit a construction grant application to Treasury for \$5,081,447.80 for the construction of this project with an anticipated project start date of December 1, 2018. The Parish intends to use Direct Component funds available during the grant performance period (estimated to be \$563,252.54 in year 2020) to address any funding shortages for this project and to reduce its local share for this project.

St. Charles Parish & Vicinity Hurricane Protection Levee System



OVERVIEW MAP



Flood Control Structures

- Existing
- Future
- Future T-Wall

Existing Levee Systems

- Various Existing Levees (WBV, Davis Pond, East Bank Levee System, East Jefferson Levee District)
- Bonnet Carre Spillway Levees

West Bank Hurricane Protection Levee Phases (WBHPL)

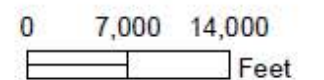
- Willowridge Levee
- Magnolia Ridge Levee
- Sunset Levee

Future Levee Systems

- West Shore Lake Pontchartrain Levee
- Upper Barataria Risk Reduction: Ellington Levee (WBHPL)
- UBRR – Lafourche Reach

MAP SCALE

1:160,000



MAP PRODUCED BY
ST. CHARLES PARISH GEOGRAPHIC INFORMATION SYSTEMS
MAP AUTHOR: LUIS MARTINEZ
075 BELLEVUE MARSHALL LA 70007
PHONE: (504) 735-1100 FAX: (504) 735-1101

MAP DISCLAIMER

This map is a graphical representation of data. St. Charles Parish does not warrant the accuracy or currency of the data it has provided and does not guarantee the suitability of the data for any purpose, expressed or implied. ALL DATA IS PROVIDED AS IS, WITH ALL FAULTS, WITHOUT WARRANTY OF ANY KIND, EITHER EXPRESSED OR IMPLIED, INCLUDING, BUT NOT LIMITED TO, THE IMPLIED WARRANTIES OF MERCHANTABILITY OR FITNESS FOR A PARTICULAR PURPOSE. This map is the proprietary product of St. Charles Parish and in no event will St. Charles Parish be liable for damages, including any loss of profits, lost savings, or other incidental or consequential damages arising out of the use of or inability to use this map.